

Launch Mission Critical Solutions with Confidence

THE OPPORTUNITY

A world leader in the development of targeting and telemetry solutions used by Navies all over the world required a solution that would enable them to increase software release cycles for their mission critical solutions. Their requirements included:

- A solution to enable efficient interoperability testing to verify every version of their bridge and turret systems communicated seamlessly
- A system that could provide their multiple R&D sites, geographically spread over hundreds of miles, the ability to run varied tests from a single secure lab location
- The ability to segment their lab in order to enable military personal to be trained on necessary equipment prior to their deployments
- A supplier that would deliver world-class support, ensuring 24x7 availability of the environment, in order to adhere their customer's strict SLAs

How did this Government contractor provide their end customer with a secure and foolproof environment for their critical interoperability testing.

THE DETAILS

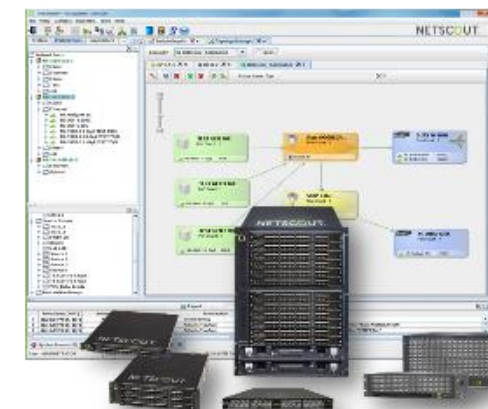
Deploying a secure, robust, automated, and transparent lab infrastructure to meet their requirements posed many challenges for the customer. Therefore, the solution must:

- Deliver a permissions-based architecture that would eliminate any concerns around lab security and access rights
- Be truly hardened to safeguard against any crosstalk or vulnerability of links
- Provide a true non-blocking architecture, enabling all links to be available during any configuration, regardless of complexity
- Significantly reduce network topology setup and tear down times
- Provide complete lab utilization visibility
- Automatically generate reports and detailed audit trails
- Remove any risks associated with manual patch panels, including incorrect connections and cable damage

THE RESULTS

NETSCOUT's Test Lab Automation solution met all their requirement criteria, and delivered a solution that:

- Enables secure monitoring and management of their lab infrastructure from any remote location via NETSCOUT's TestStream Lab Management Software
- Is architected to eliminate technical concerns including crosstalk and blocking
- Provides complete flexibility to quickly create and implement topologies on short notice and provide lab management with 24 x 7 visibility
- Delivers the highest port density, supporting both legacy speeds (10/100Mbps) to 100Gbps and beyond
- Has increased the efficiency of their test tools, devices under test, and lab personnel, thereby reducing software release cycle times
- Includes NETSCOUT's award winning MasterCare Global Support, providing access to experts to keep their systems up and running 24 x 7



Increased efficiency of test tools, DUTs, and lab personnel means improved customer productivity

CONTACT
AN EXPERT



Utilizing NETSCOUT's line of Test Automation switches in conjunction with TestStream Management Software enables lab managers from all market verticals to meet the challenges associated with their environments. For more information, please visit <https://www.netscout.com/solutions/test-lab-automation>.