

Increase Cyber Resilience with Advanced Cyber Ranges



THE OPPORTUNITY

The race within nation states and rogue groups to acquire traditional weaponry has been augmented with an increasing race to acquire cyber weaponry. Due to the growing need to defend against cyber attacks, cyber ranges are now seen as a modern-day equivalent to traditional firing ranges. A global leader in Cyber Warfare needed to increase their cyber resilience via the use of advanced Cyber Ranges. They required a solution to include:

- A simulated representation of the network, systems, and applications enabling multiple agencies to improve Cyber Security skillsets
- Complete flexibility at scale while enabling real-time feedback to monitor activities
- A simulated environment where multiple teams can work together to solve complex cyber problems
- A secure infrastructure that can be segmented into multiple environments to increase usage scenarios
- A supplier that can deliver world-class support, ensuring 24x7 availability of the environment to adhere to strict customer Service Level Agreements

THE DETAILS

Deploying a secure, automated, and flexible infrastructure to meet their requirements posed multiple challenges for the customer. The solution chosen must:

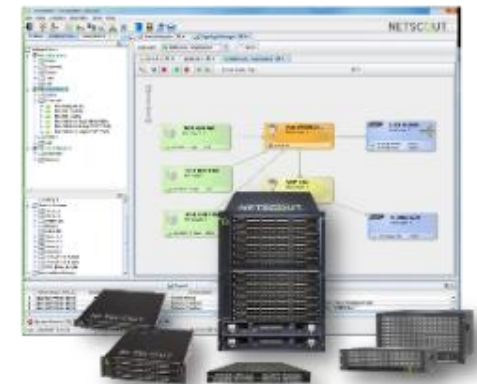
- Provide a true non-blocking architecture, enabling all links to be available during any configuration, regardless of complexity and/or scale
- Enable flexibility for users to securely share traffic generators and/or applications, thereby increasing utilization and reducing CAPEX & OPEX spend
- Deliver a permissions-based architecture to eliminate any concerns around lab security and access rights
- Be truly hardened in order to safeguard against any crosstalk or vulnerability of links
- Automatically generate reports and detailed audit trails

How did this Government contractor provide their end customer with a secure and foolproof environment for their critical interoperability testing?

THE RESULTS

NETSCOUT's Test Lab Automation solution with TestStream Lab Management met all the customer's requirement criteria, and delivered a solution that:

- Delivers complete flexibility (at scale) to swiftly create and implement secure topologies on demand while providing range management with 24x7 visibility
- Enables secure monitoring and management of their lab infrastructure from any remote location via NETSCOUT's TestStream Lab Management Software
- Is architected to eliminate technical limitations, including crosstalk, routing-based security breaches, and blocking
- Provides secure lab access to local and remote teams via easy-to-use software
- Delivers the highest port density, supporting both legacy speeds (10/100Mbps) to 100Gbps and beyond
- Includes NETSCOUT's award winning MasterCare Global Support, providing access to experts in order to keep their systems up and running 24x7



Increased efficiency of test tools, DUTs, and lab personnel means improved test lab productivity

CONTACT
AN EXPERT



Utilizing NETSCOUT's line of Test Automation switches in conjunction with TestStream Management Software enables lab managers from all market verticals to meet the challenges associated with their environments. For more information, please visit www.netscout.com/solutions/test-lab-automation.